

REV.	DESCRIPTION	DATE	DRAFTER	APPROVER
A1	DWG.REL	2020.05.22	DENG	JIN

- Material  
 ØScrews : M3.0 steel, Zinc plated,  
 \*-\* slot type  
 ØHousing : PA66, UL94V-0  
 ØClamp : Copper alloy, Ni plated  
 ØPin header : Copper alloy, Tin plated

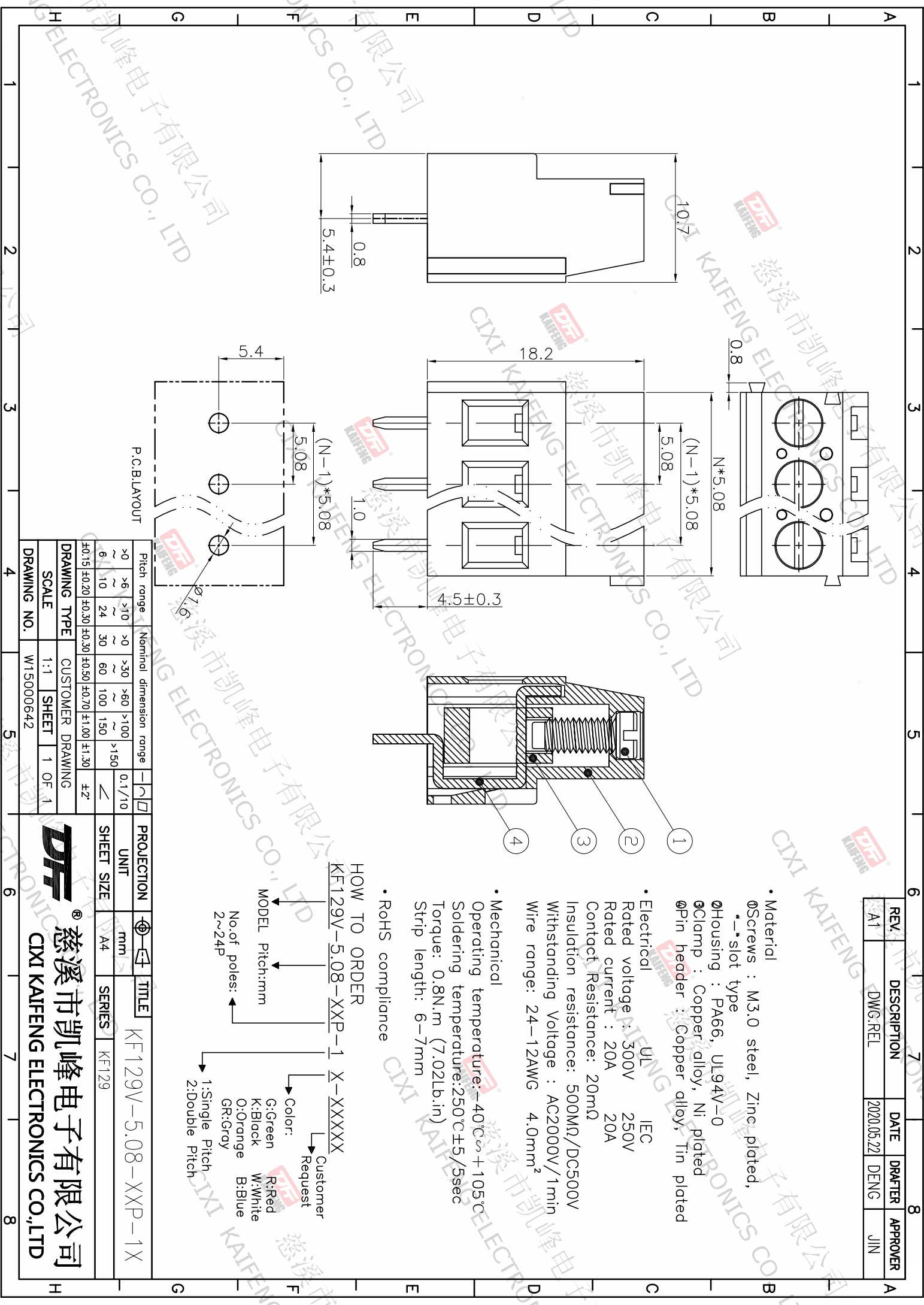
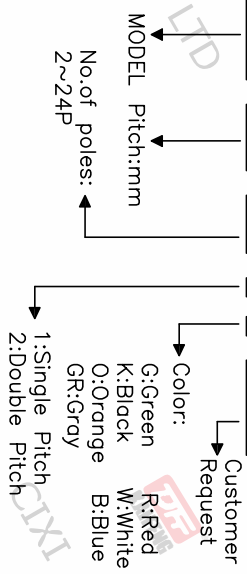
- Electrical  
 UL IEC  
 Rated voltage : 500V 250V  
 Rated current : 20A 20A  
 Contact Resistance: 20mΩ  
 Insulation resistance: 500MΩ/DC500V  
 Withstanding Voltage : AC2000V/1min  
 Wire range: 24-12AWG 4.0mm<sup>2</sup>

- Mechanical  
 Operating temperature: -40°C ~ +105°C  
 Soldering temperature: 250°C ± 5/5sec  
 Torque: 0.8N.m (7.02lb.in)  
 Strip length: 6-7mm

• RoHS compliance

HOW TO ORDER

KF129V-5.08-XXP-1 X-XXXXX



P.C.B.LAYOUT

Pitch range	Nominal dimension range	PROJECTION	UNIT
>0	>0	0.1/10	mm
>6	>10		
~	~		
10	24		
~	~		
30	60		
~	~		
100	150		
~	~		
150	>150		
±2°	±2°		

DRAWING TYPE	CUSTOMER DRAWING
SCALE	1:1 SHEET 1 OF 1
DRAWING NO.	W15000642

**DF** 慈溪市凯峰电子有限公司  
CIXI KAIFENG ELECTRONICS CO.,LTD

TITLE: KF129V-5.08-XXP-1X  
SHEET SIZE: A4  
SERIES: KF129