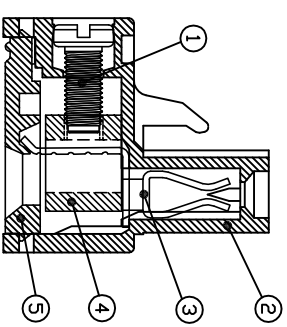
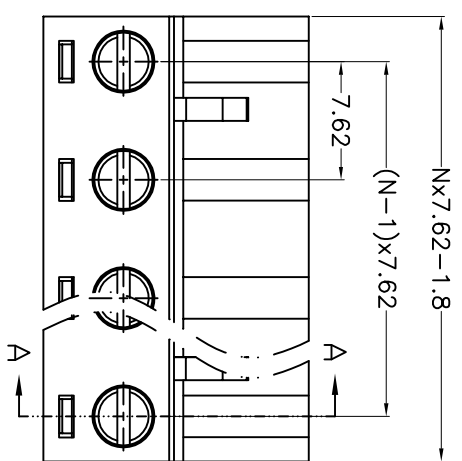
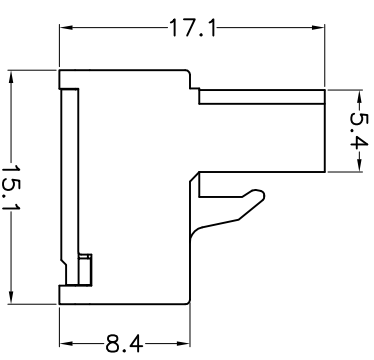
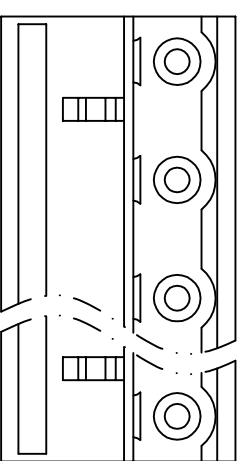
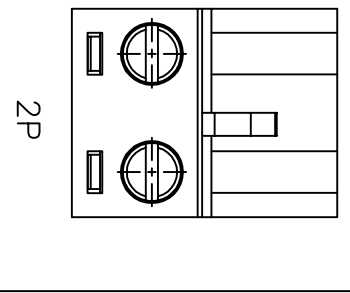
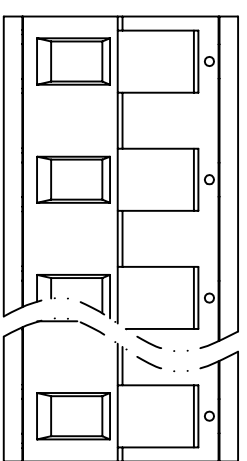


REV.	DESCRIPTION	DATE	DRAFTER	APPROVER
V1.0	DWG.REL	2024.9.22	ZHANG	JIN



SECTION A-A



- Material
 ØScrew : M3.0 steel, Zinc plated, *- slot type
 ØHousing : PA66, UL94V-0
 ØContact : Copper alloy, Tin plated
 ØClamp : Copper alloy, Ni plated
 ØCover : PA66, UL94V-0
- Electrical
 UL IEC
 Rated voltage : 300V 400V
 Rated current : 15A 20A
 Contact resistance : 20mΩ(Max)
 Insulation resistance : 500MΩ/DC500V
 Withstanding Voltage : AC2500V/1min
 Wire range : 28-12AWG 2.5mm²
- Mechanical
 Operating temperature: -40°C to +105°C
 Soldering temperature: 250°C ±5/5sec
 Torque: 0.5N·m (4.43lb.in)
 Strip length: 7mm
- Conform to REACH and RoHS

HOW TO ORDER
 KF2EDG-X-7.62-XXP-1 X-XXXXX

MODEL Pitch:mm

No. of poles: 2~24P

Color: Customer Request
 G:Green R:Red
 K:Black W:White
 O:Orange B:Blue
 GR:Grey

1:Single Pitch
 2:Double Pitch

Pitch range	Nominal dimension range	PROJECTION
>0	>10	0.1/10
~	~	~
6	10	~
~	~	~
10	24	~
~	~	~
±0.15	±0.20	±2°
±0.30	±0.30	±2°
±0.50	±0.50	±2°
±0.70	±1.00	±2°
±1.00	±1.30	±2°

DRAWING TYPE	CUSTOMER DRAWING	SHEET SIZE	TITLE
SCALE	1:1	A4	KF2EDG-X-7.62-XXP-1X
DRAWING NO.	W10000152		

DF 慈溪市凯峰电子有限公司
 CIXI KAIFENG ELECTRONICS CO.,LTD